

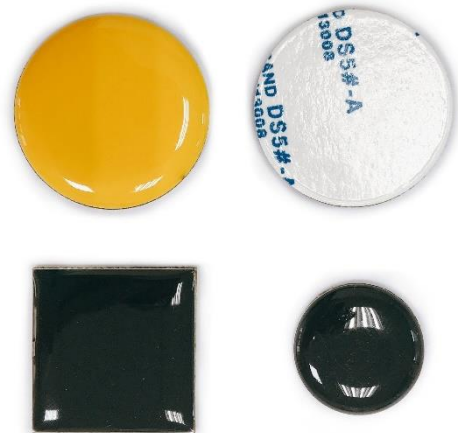


## Mount-on-Metal Series

### Model: MT Series\_Large Size

#### 1. Introduction

The large-sized mount on metal RFID is designed to meet the demands of high-performance systems requiring long-range reading capabilities. Its extended reading range enables diverse applications for RFID systems, and the epoxy-coated surface ensures robust impact resistance and water resistance. Furthermore, the center drilling feature facilitates simplified and efficient installation processes.



#### 2. Available IC

21, 30, 50mm: EM4200, T5577, Mifare series, I.CODE series, Ntag series, LEGIC, Hitag series, DESFire, UCODE8

65, 85mm: EM4200, T5577, Mifare series, I.CODE series, Ntag series, LEGIC, Hitag series, DESFire

#### 3. Data Sheet

Item	Specification
Operating Frequency	<u>21, 30, 50mm</u> : 125 KHz & 13.56 MHz & 860MHz-960MHz <u>65, 85mm</u> : 125 KHz & 13.56 MHz
Material	PVC + Epoxy or Glass Fiber + Epoxy
Storage Temperature	-30°C to +100°C
Operating Temperature	-30°C to +85°C
International Protection	IP67
Operating Distance	Depends on reader design
Dimension	21/30/50/65/85(D) mm
Options	Laser Marking/ Inkjet Printing